

<http://dx.doi.org/10.5597/lajam00155>

## MITOCHONDRIAL DNA DIVERSITY, DIFFERENTIATION AND PHYLOGEOGRAPHY OF THE SOUTH AMERICAN RIVERINE AND COASTAL DOLPHINS *SOTALIA FLUVIATILIS* AND *SOTALIA GUIANENSIS*

SUSANA CABALLERO<sup>1,2,\*</sup>, FERNANDO TRUJILLO<sup>3</sup>, JULIANA A. VIANNA<sup>4,5</sup>, HÉCTOR BARRIOS-GARRIDO<sup>6</sup>,  
MARIA G. MONTIEL<sup>7</sup>, SANDRA BELTRÁN-PEDREROS<sup>8</sup>, MIRIAM MARMONTEL<sup>9</sup>, MARCOS C. DE O. SANTOS<sup>10</sup>,  
MARCOS R. ROSSI-SANTOS<sup>11</sup>, FABRICIO R. SANTOS<sup>4</sup> AND C. SCOTT BAKER<sup>1,12</sup>

**ABSTRACT:** Here we consider the phylogeography and population structure of the South American coastal and riverine dolphins, *Sotalia guianensis* and *Sotalia fluviatilis*, based on samples (n = 76) collected across more than 9000km of the species distribution. Phylogenetic reconstruction of 31 distinct haplotypes based on a combined analysis of two mitochondrial gene fragments (1052bp) revealed clear genetic differences between riverine and coastal individuals consistent with species-level ranking. Within the coastal species, a spatial analysis of molecular variance of the control region sequences showed significant regional population differentiation ( $F_{ST} = 0.4$ ;  $F_{ST} = 0.6$ ;  $P < 0.001$ ). The highest mitochondrial diversity among coastal population units was found along the Caribbean Coast of Colombia and Venezuela. The genetic distinctiveness of the Maracaibo Lake (Venezuela) population has conservation implications regarding the threats faced by the animals in this region, including oil exploitation. Brazilian populations of *Sotalia* showed the lowest mitochondrial diversity and differentiation among the coastal species warranting further investigation. The Amazonian populations showed the highest mitochondrial diversity overall, suggesting a surprisingly large effective population size ( $N_{ef}$ ) and relatively high female gene flow throughout the sampled regions of the main river and its tributaries. From our results, at least two different conservation strategies need to be developed for each of the proposed sister-species. For the coastal groups, characterized by restricted gene flow and very localized populations along the Caribbean and Atlantic Coast of South America, it is advisable to work at a local level in order to improve the fishing practices and prevent frequent dolphin entanglement in nets. For the Amazonian groups, priority must be given to maintain the connectivity detected between regions. Obstacles to connectivity, including hydroelectric and dam construction, as well as excessive boat traffic, could affect the future of these populations.

**RESUMEN:** En este trabajo consideramos aspectos filogeográficos y estructura poblacional de los delfines Sudamericanos *Sotalia guianensis* (especie costera) y *Sotalia fluviatilis* (especie de río), utilizando muestras (n = 76) colectadas a lo largo de 9000km de la distribución de dichas especies. Reconstrucciones filogenéticas de 31 haplotipos únicos basados en el análisis de fragmentos de dos genes mitocondriales (1052 pb) revelaron diferencia genéticas claras entre individuos costeros y de río, consistentes con diferenciación a nivel de especies. Un análisis espacial de varianza molecular de la región control del ADN mitocondrial indicó diferencias genéticas significativas a nivel regional entre individuos costeros ( $F_{ST} = 0.4$ ;  $F_{ST} = 0.6$ ;  $P < 0.001$ ). La mayor diversidad de haplotipos mitocondriales fue detectada en poblaciones del Caribe Colombiano y el Lago de Maracaibo, Venezuela. La población del Lago de Maracaibo presenta características genéticas únicas, teniendo como consecuencia implicaciones para el manejo y conservación de dicha población, afectada por la explotación petrolera en dicha área. La menor diversidad de haplotipos mitocondriales se encontró en poblaciones de la costa de Brasil. Las poblaciones Amazónicas presentaron la mayor diversidad mitocondrial, sugiriendo un tamaño efectivo ( $N_{ef}$ ) para esta población sorprendentemente grande y sugiriendo flujo genético actual mediado por hembras entre diversas poblaciones a lo largo del río Amazonas y varios de sus tributarios. Dichos resultados indican que al menos dos estrategias de conservación diferentes deben ser adoptadas. En el caso de los grupos costeros, es necesario trabajar a nivel local para mejorar las prácticas y artes de pesca y así prevenir enmallamientos frecuentes. En el caso de las poblaciones de río, la prioridad debe ser el mantenimiento de la conectividad entre las diversas regiones y poblaciones. Obstáculos para mantener dicha conectividad pueden poner en peligro el futuro de estas poblaciones.

**Keywords:** *Sotalia fluviatilis*, *Sotalia guianensis*, mitochondrial DNA, phylogeography, population structure.

<sup>1</sup>Laboratory of Molecular Ecology and Evolution, School of Biological Sciences, The University of Auckland, Private Bag 92019, Auckland, New Zealand

<sup>2</sup>Laboratorio de Ecología Molecular de Vertebrados Acuáticos, Departamento de Ciencias Biológicas, Universidad de los Andes, Carrera 1 # 18 A-10, Bogotá, Colombia

<sup>3</sup>Fundación Omacha, Diagonal 86A # 30-38, Bogotá, Colombia

<sup>4</sup>Laboratório de Biodiversidade e Evolução Molecular, Departamento de Biologia Geral, ICB, Universidade Federal de Minas Gerais, Av. Antonio Carlos, 6627 C.P. 486, 31270-010 Belo Horizonte, MG, Brazil

<sup>5</sup>Departamento de Ecosistemas y Medio Ambiente, Facultad de Agronomía e Ingeniería Forestal, Pontificia Universidad Católica de Chile, Av. Vicuña Mackenna 4860, San Joaquín, Santiago, Chile

<sup>6</sup>Laboratorio de Ecología General, Facultad Experimental de Ciencias, Universidad del Zulia, Av. Universidad con prolongación Av. 5 de Julio, Sector Grano de Oro, Maracaibo, Venezuela

<sup>7</sup>Laboratorio de Ecología y Genética de Poblaciones, Centro de Ecología, Instituto Venezolano de Investigaciones Científicas, San Antonio de los Altos, Carretera Panamericana km 11, Altos de Pipe, Estado Miranda, Venezuela

<sup>8</sup>Laboratório de Zoologia, Coleção Zoológica Paulo Burheim, Centro Universitário Luterano de Manaus, Manaus, AM, Brazil

<sup>9</sup>Instituto de Desenvolvimento Sustentável Mamirauá, Estrada do Bexiga 2584 Fonte Boa, 69470-000 Tefé, AM, Brazil

<sup>10</sup>Projeto Laboratório de Biologia da Conservação de Cetáceos, Programa de Pós-Graduação em Zoologia, Departamento de Zoologia, Instituto de Biociências, Universidade Estadual Paulista 'Júlio de Mesquita Filho', Campus Rio Claro, Av. 24-A, 1515, Bela Vista, Rio Claro, SP, Brasil, 13506-900

<sup>11</sup>Instituto Baleia Jubarte, Rua Barão do Rio Branco 26, 45900-000 Caravelas, BA, Brazil

<sup>12</sup>Marine Mammal Institute and Department of Fisheries and Wildlife, Hatfield Marine Science Center, Oregon State University, 2030 SE Marine Science Drive, Newport, Oregon 97365, USA

\* Corresponding author, e-mail: sj.caballero26@uniandes.edu.co

## Introduction

The coastal and riverine forms of the South American dolphin *Sotalia* have been recently proposed and recognized as different species (Monteiro-Filho *et al.*, 2002; Cunha *et al.*, 2005; Caballero *et al.*, 2007). The coastal species, *S. guianensis*, ranges from Nicaragua (Carr and Bonde, 2000) to Southern Brazil (Borobia *et al.*, 1991; da Silva and Best, 1996b) including the Caribbean islands of Trinidad and Tobago. An apparently distinct population has also been described in Lake Maracaibo, Venezuela, with morphological characteristics different from other coastal individuals (Hershkovitz, 1962; Casinos *et al.*, 1981). The riverine species, *S. fluviatilis*, ranges throughout the Amazon River and most of its tributaries (da Silva and Best, 1994; da Silva *et al.*, 2011; Gómez-Salazar *et al.*, 2010 this volume). Although *Sotalia* are also reported 250km up-river in the Orinoco (Gómez-Salazar *et al.*, 2010 this volume), it is unclear if these animals are residents or transients from the coast (Boher *et al.*, 1995). *Sotalia* is considered 'data deficient' by the IUCN (Klinowska, 1991; Reeves *et al.*, 2003) and is listed in Appendix I of the Convention on International Trade in Endangered Species of Wild Fauna and Flora (CITES). Other researchers consider it endangered and in need of protection (Barros and Teixeira, 1994). The main anthropogenic threat that affects this species is gillnet entanglement, mainly in the Amazonian Estuary (da Silva and Best, 1996a; Beltrán-Pedrerros, 1998; Trujillo *et al.*, 2000). In other areas they are killed for shark bait and their eyes and genital organs sold as magical charms (Siciliano, 1994; Meirelles *et al.*, 2010 this volume). The destruction of their habitat, oil and pesticide pollution (Trujillo *et al.*, 2000; Monteiro-Neto *et al.*, 2003; Yogui *et al.*, 2003; Alonso *et al.*, 2010 this volume), and construction of dams for hydroelectric projects are other factors that may also impact the long-term viability this species (da Silva and Best, 1996b).

Here we present the first comprehensive description of the phylogeography of *Sotalia*; investigating the genetic relationships between sister-species and among various populations along the Caribbean and Atlantic Coast of South America and in the Amazonian region based on the analysis of two regions of mitochondrial DNA, the control region (CR) and the cytochrome *b* (Cyt-*b*) gene.

## Material and Methods

### SAMPLE COLLECTION AND DNA EXTRACTION

A total of 76 samples of skin, liver, bone or teeth were obtained from *S. fluviatilis* and *S. guianensis* in 18 locations grouped into nine geographic regions throughout their range (Figure 1 and Table 1). DNA extraction from tissue samples followed the protocol of Sambrook *et al.* (1989), modified for small samples by Baker *et al.* (1994). DNA was extracted from bones following a silica-guanidinium thiocyanate based protocol described by Pichler *et al.* (2001).

### PCR AMPLIFICATION AND SEQUENCING

Two mitochondrial genetic markers were analyzed; a 627 base pairs (bp) portion of the mitochondrial DNA control region (CR) and 425bp fragment of the cytochrome *b* (Cyt-*b*) gene. Degradation of DNA or inhibition prevented clean amplification and sequencing of Cyt-*b* from all teeth and bone (n = 13) and 12 skin samples. These samples are represented only by partial CR sequences. PCR products were cleaned, and sequenced on an automated capillary sequencer. For more information, including amplification conditions and primers, please refer to Caballero *et al.* (2007).

### DATA ANALYSES

All sequences were manually edited and aligned using *Sequencher* 4.1 software (Gene Codes Corporation). For the combined mitochondrial dataset (CR + Cyt-*b*, 1,052 bp), haplotypes were defined using *MacClade* (Maddison and Maddison, 2000). For bone samples where it was not possible to obtain Cyt-*b* sequences, haplotypes were defined using only CR. The model of substitution for the combined mitochondrial dataset was tested in *Modeltest* v3.06 (Posada and Crandall, 1998) and the settings for this model were used in the phylogenetic reconstructions using Maximum Parsimony, Maximum Likelihood and Neighbor-Joining methods performed in *PAUP* v4.0b1 (Swofford, 2002). A Partitioning of Homogeneity Test was run in *PAUP* in order to determine if phylogenies reconstructed with each of the mitochondrial genes differed significantly from the phylogeny reconstructed from the combined genes. *Steno bredanensis* and *Sousa chinensis* were used as outgroups. In order to investigate genealogical relationships among *Sotalia guianensis* and among *Sotalia fluviatilis* CR haplotypes, Union of Maximum Parsimonious Trees (UMP) (Cassens *et al.*, 2005) was used to calculate and construct a network of CR haplotypes. This method requires two consecutive steps. First, a Maximum Parsimony analysis was performed for the CR haplotype data set and all most parsimonious trees are saved with their respective branch lengths. We used the TBR branch-swapping (1000 replicates with random sequence addition) heuristic search option in *PAUP* (Swofford, 2002). Second, all the saved MP trees are combined into a single figure combining all connections from MP trees into a single reticulated graph, and merging branches, sampled or missing, that are identical among different trees (see Cassens *et al.* 2005 for additional details on this analysis). The haplotype frequency was combined with the CR haplotype network, and the final network was drawn by hand. Analyses of diversity and population structure were performed in the program *Arlequin* (Schneider *et al.*, 2000) and restricted to the CR (450bp) because of the larger sample size for this locus. To evaluate genetic boundaries between the sampling locations studied, we performed a spatial analysis of molecular variance (SAMOVA) (Dupanloup *et al.*, 2002). Genetic differences among the estimated populations detected in the

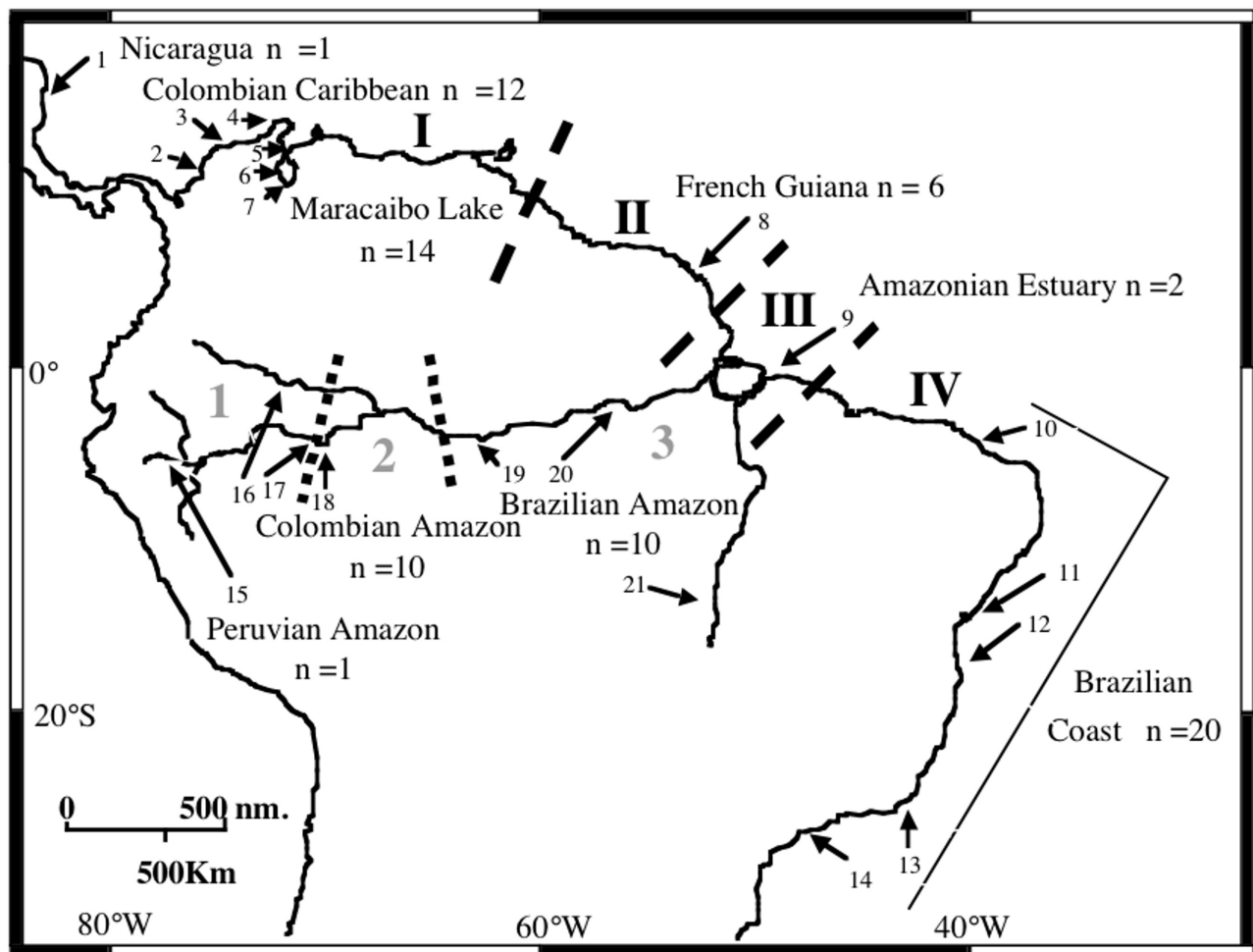
SAMOVA analysis were then quantified by an analysis of molecular variance (AMOVA) as implemented in *Arlequin* (Excoffier *et al.*, 1992) based on conventional  $F_{ST}$  and  $\Phi_{ST}$  statistics, using 10000 random permutations. The number of female migrants per generation ( $N_{mf}$ ), as a measure of gene flow among localities, was estimated based on the  $F_{ST}$  value, using the equation  $N_{mf} = 1/2(1/F_{ST} - 1)$  (Takahata and Palumbi, 1985) assuming Wright's island model. We calculated the long-term female effective population size ( $N_{ef}$ ) for selected populations using the relationship  $\theta = 2N_{ef}\mu$  ( $\mu$  estimated to range from  $1.70 \times 10^{-7}$  to  $1.96 \times 10^{-7}$  bp<sup>-1</sup> generation<sup>-1</sup>) (Caballero, 2006) using the software *Fluctuate* (Kuhner *et al.*, 1998).

## Results

### PHYLOGEOGRAPHY AND POPULATION STRUCTURE

A total of 627bp of the CR and 425bp of the *Cyt-b* gene were analyzed. As the Partition Homogeneity Test found

no conflicting phylogenies ( $p = 0.97$ ), both fragments were combined for haplotype determination. Twenty-nine of the thirty-one haplotypes found were distinguished by substitutions in the highly diverse CR. Two additional haplotypes were distinguished by the *Cyt-b* gene (Figure 2). Haplotype sequences were submitted to Genbank as accession numbers EF027006 to EF027092. Phylogenetic reconstructions by Maximum Parsimony, Maximum Likelihood (using the model HKY+I+G from *Modeltest*, proportion of invariable sites = 0.54, gamma shape parameter ( $\alpha$ ) = 0.5) and Neighbor-Joining showed clear reciprocal monophyly for individual and combined genes between haplotypes of the two sister-species (Figure 3). Given the reciprocal monophyly observed between forms and considering recent elevation to species level, we examined population structure within each separated sister-species. Very few haplotypes were shared between different geographic regions within each proposed sister-species. Only two haplotypes were shared among coastal regions: the haplotype D, was shared among the



**figure 1.** Distribution of coastal and riverine *Sotalia* showing geographic regions, sampling locations and sample sizes of samples included in this study. Also indicated are the proposed genetic boundaries between *Sotalia guianensis* and *Sotalia fluviatilis* population units from the SAMOVA analysis. Four units for the coastal species (dashed line, black numbers): I = Colombian Caribbean + Maracaibo Lake, II = French Guiana, III = Amazonian Estuary and IV = Brazilian Coast. Three units for the riverine species (dotted line, grey numbers): 1 = Western Amazon, 2 = Central Amazon, 3 = Eastern Amazon.

**Table 1.** Sampling locations and tissue type obtained for coastal (*S. guianensis*) and riverine (*S. fluviatilis*) *Sotalia*. Numbers in parenthesis before each sampling location correspond to the number of this sampling location in Figure 1.

GEOGRAPHIC REGION	SAMPLING LOCATION	SPECIES	SAMPLE SIZE AND TYPE	AMPLIFICATION SUCCESS FOR CR	AMPLIFICATION SUCCESS FOR CYT-B	
Nicaragua	(1) Mouth of the Layasiksa River, Waunta Lagoon	Coastal	1 tooth*	3	-	
Colombian Caribbean	(2) Morrosquillo Gulf (Córdoba province)	Coastal	4 skins 1 tooth	3 3	3 -	
	(3) Santa Marta (Magdalena province)	Coastal	3 skins	3	3	
	(4) La Guajira province	Coastal	4 skins	3	3	
	(5) Zapara Island	Coastal	11 skins	3	73and 4-	
Maracaibo Lake	(6) Barranquitas	Coastal	2 skins	3	-	
	(7) Mouth of the Catatumbo River	Coastal	1 bone	3	-	
	(8) Cayenne	Coastal	6 skins	3	3	
French Guiana	(9) Belém (Pará state)	Coastal	2 skins	3	3	
Amazonian Estuary	(10) Ceará state	Coastal	1 liver	3	-	
	(11) Bahía state	Coastal	2 skins	3	3	
	(12) Espírito Santo state	Coastal	2 skins	3	3	
	(13) Rio de Janeiro state	Coastal	2 skins 1 DNA**	3 3	-	
	(14) Cananéia estuary (São Paulo state)	Coastal	12 skins	3	3	
	Peruvian Amazon	(15) Curaray River	Riverine	1 skin	3	3
	Colombian Amazon	(16) Caquetá River	Riverine	2 bone	3	-
(17) Puerto Nariño (Amazonas province)		Riverine	2 skins 4 teeth	3 3	- -	
(18) Leticia (Amazonas province)		Riverine	1 skin 1 tooth	3 3	- -	
Brazilian Amazon		unknown	Riverine	1 DNA**	3	-
Brazilian Amazon	(19) Tefé (Amazonas state)	Riverine	7 skins	3	3	
	(20) Santarém (Pará state)	Riverine	1 bone	3	-	
	(21) Formoso Araguaia River	Riverine	1 bone	3	-	

\* Sample donated by the USNM: United States National Museum Smithsonian Institution (Washington D.C, USA)

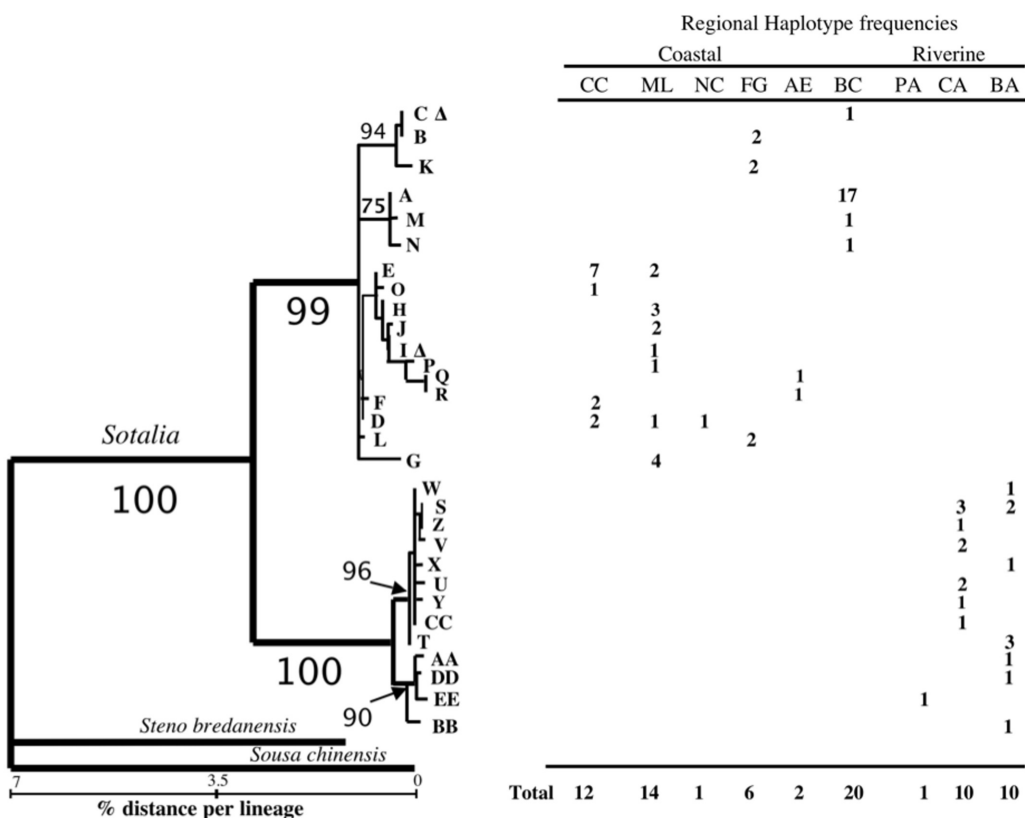
\*\*Sample donated by the SWFSC: Southwest Fisheries Science Center (La Jolla, CA, USA)

Colombian Caribbean (CC), Maracaibo Lake (ML), and Nicaragua (NC) samples, and the haplotype (E) was shared between the Colombian Caribbean and Maracaibo Lake regions. Only one haplotype (S) was shared between the Colombian Amazon (CA) and Brazilian Amazon (BA) geographic regions. For *Sotalia guianensis*, fourteen out of seventeen haplotypes were included in the UMP analysis. Three were excluded since they contained too much missing data, as this can affect the performance of the algorithm used for combination of all most parsimonious trees into one network or haplotype genealogy. Ten most parsimonious trees were obtained and these were combined in the haplotype genealogy presented in Figure 4a. The haplotype in central position, connected with a high number of other haplotypes was D, found in the Colombian Caribbean (CC), Maracaibo Lake (ML) and Nicaragua (NC) geographic regions. Two

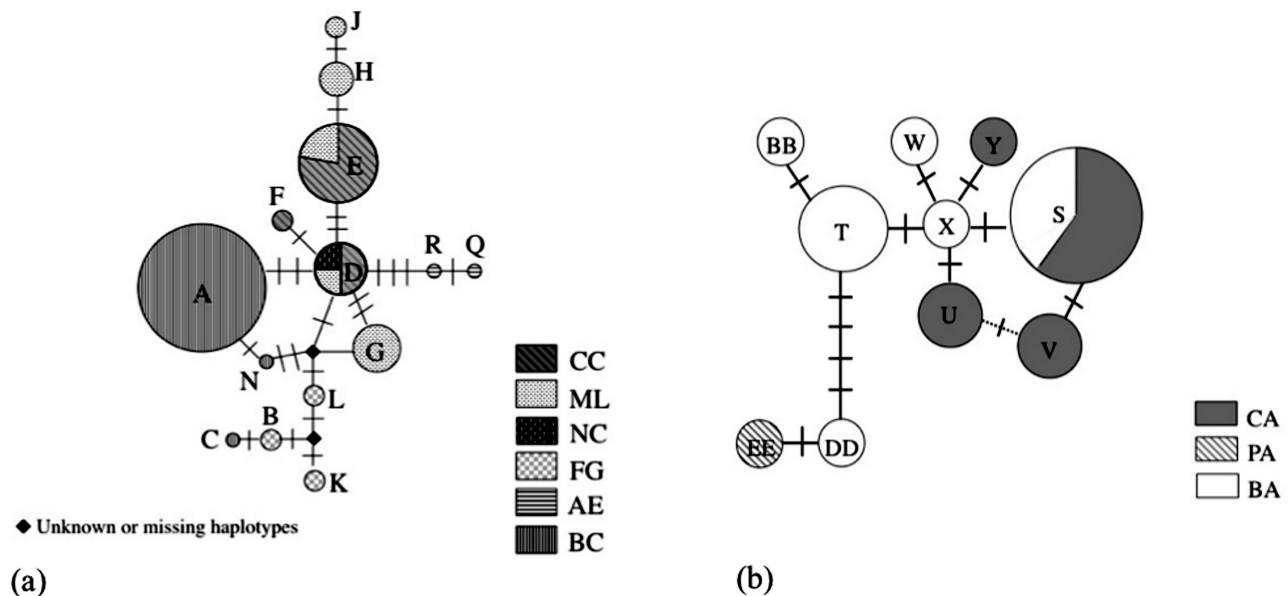
unknown or missing haplotypes were determined by the UMP analysis. These could be ancestral or haplotypes that were missed during the sampling. For *Sotalia fluviatilis*, ten haplotypes were included in the UMP analysis. Three haplotypes were excluded since they contained too much missing data. Six most parsimonious trees were obtained and these were combined in the haplotype genealogy presented in Figure 4b. The haplotypes in a central position, connected with a high number of other haplotypes were X, S and T and haplotypes DD and EE were the most divergent. In three of the six most parsimonious trees, haplotypes U and V were connected therefore we included this haplotype connection in the final figure. We performed separate SAMOVA analysis for each sister-species, considering sampling regions with  $n \geq 2$ . Thus, samples from Nicaragua, and Ceará (Brazilian Coast) were excluded







**Figure 3.** Maximum Parsimony phylogenetic reconstruction of the combined mitochondrial haplotypes (1052 bp), showing bootstrap values (1000 replicates) and the frequency of occurrence in each geographic region. Abbreviations follow Figure 1 and Table 1. Letters on terminal branches represent haplotype codes. (“) indicates haplotypes distinguished on the basis of the *Cyt-b* gene. % divergence calculated in *MEGA2*, using the Tamura-Nei distance option and the settings for the HKY+G+I output in *Modeltest*.



**Figure 4.** Haplotype genealogy obtained from the Union of Maximum Parsimonious Trees (UMP) analysis. The size of the circles reflect frequency of a particular haplotype found in: a) the Colombian Caribbean (CC), Maracaibo Lake (ML), Nicaragua (NC), French Guiana (FG), Amazonian Estuary (AE) and Brazilian Coast (BC) geographic regions; and b) the Colombian Amazon (CA), Peruvian Amazon (PA) and Brazilian Amazon (BA) geographic regions. Connections between haplotypes found in all most parsimonious trees are represented by a continuous line, while connections between haplotypes found in half of all most parsimonious trees are represented by a dotted line. Crossbars represent substitutions between haplotypes.

**Table 2.** Pairwise  $F_{ST}$  (below diagonal) and  $F_{ST}$  (above diagonal) values for Control Region among four coastal *Sotalia* population units. Probability values based on 10,000 permutations are shown in italics. Significantly different values ( $P < 0.05$ ) are shown in bold. Haplotype ( $h$ ) and nucleotide ( $p$ ) %  $\pm$  standard deviation (SD) are shown on the diagonal for each population unit.

$F_{ST}$ \ $\Phi_{ST}$	NORTHERN SOUTH AMERICA	FRENCH GUIANA	BRAZILIAN COAST
<i>Northern South America</i>	$h = 0.8369 \pm 0.049$ $\pi = 0.48 \pm 0.0032$	0.5635 <b>(&lt;0.0001)</b>	0.6311 <b>(&lt;0.0001)</b>
<i>French Guiana</i>	0.1773 <b>(0.0007)</b>	$h = 0.8000 \pm 0.1217$ $\pi = 0.48 \pm 0.0035$	0.7823 <b>(&lt;0.0001)</b>
<i>Brazilian Coast</i>	0.4166 <b>(&lt;0.0001)</b>	0.5468 <b>(0.0001)</b>	$h = 0.2842 \pm 0.1284$ $\pi = 0.16 \pm 0.0014$

**Table 3.** Pairwise  $F_{ST}$  (below diagonal) and  $F_{ST}$  (above diagonal) values for Control Region among two riverine *Sotalia* population units. Probability values based on 10,000 permutations are shown in italics. Significantly different values ( $P < 0.05$ ) are shown in bold. Haplotype ( $h$ ) and nucleotide ( $p$ ) %  $\pm$  standard deviation (SD) are shown on the diagonal for each population unit.

$F_{ST}$ \ $\Phi_{ST}$	WESTERN AMAZON	EASTERN AMAZON
<i>Western Amazon</i>	$h = 0.8571 \pm 0.108$ $\pi = 0.294 \pm 0.0025$	0.2959 <b>(0.0176)</b>
<i>Eastern Amazon</i>	0.0541 <b>(0.2520)</b>	$h = 0.8610 \pm 0.01$ $\pi = 0.48 \pm 0.0036$

**Table 4.** Overall haplotype and nucleotide diversity, as well as the estimated  $q$ , for coastal and riverine *Sotalia*.

SPECIES	HAPLOTYPE DIVERSITY ( $h$ ) (% $\pm$ SD)	NUCLEOTIDE DIVERSITY ( $\pi$ ) (% $\pm$ SD)	$\theta$
<i>Coastal Sotalia</i> (n = 55)	0.85 $\pm$ 0.04	0.74 $\pm$ 0.04	0.0093
<i>Riverine Sotalia</i> (n = 21)	0.90 $\pm$ 0.05	0.46 $\pm$ 0.03	0.0069

#### GENETIC DIVERSITY AND LONG-TERM FEMALE EFFECTIVE POPULATION SIZE

We found relatively high haplotype and nucleotide diversity in most of the coastal population units considered in this analysis (Table 2), but very low haplotype and nucleotide diversity in the Brazilian Coast population unit. The highest haplotype diversity occurred among riverine population units (Table 3). Including all samples from all geographic regions, haplotype diversity ( $h$ ) for coastal *Sotalia* was  $0.85 \pm 0.04$  and for the riverine *Sotalia* was  $0.90 \pm 0.05$ . Overall nucleotide diversity ( $\pi$ ) was 0.74% for coastal *Sotalia* and 0.46% for riverine *Sotalia* (Table 4). For the coastal species, long-term female effective population size ( $N_{ef}$ ), calculated as a way of estimating the evolutionary potential of this population but understanding its limitations, ranged between 24,400 and 26,900 individuals and for the riverine species, between 17,800 and 19,600. We chose to estimate the effective population size for the Brazilian population unit separately due to the low genetic diversity determined.

The long-term female effective population size for the Brazilian Coast population unit ranged between 12,800 and 14,200 individuals.

#### Discussion

##### POPULATION STRUCTURE

The population structure, phylogenetic and SAMOVA analysis revealed strong regional structuring among the coastal populations sampled in this study. Most of the CR haplotypes were present in only one geographic region, indicating a low level of female-mediated gene flow between these regions. Our AMOVA results seems to suggest that the Maracaibo Lake population originated from a founder event of individuals from the Colombian Caribbean or that these two populations have differentiated recently, as can be deduced from the significant  $F_{ST}$  values but the non-significant  $\Phi_{ST}$  values. This is also suggested by the haplotype genealogy, where some divergent haplotypes are found in the Maracaibo Lake geographic region (H and J).

However, the degree of genetic differentiation observed between these two geographic regions is sufficient argument to consider the Maracaibo Lake population as a separate Genetic Management Unit (GMU) (Moritz, 1994). The low nucleotide diversity found in the Brazilian Coast population unit, accompanied by the surprisingly high long-term female effective population size estimated from our data, may reflect a historic founder event with a subsequent population expansion, perhaps at the end of the last glacial period (12000 ya), as suggested by Cunha *et al.* (2005), similar to what has been suggested for the Antillean manatee (*Trichechus manatus*) in the extremes of its distribution range (Vianna *et al.*, 2006). These results (historic founder events followed by population expansions) are also consistent with the genealogy (Figure 4a), where haplotype D seems to be ancestral, considering that it is geographically widespread, is connected to a higher number of other haplotypes, and is located in a central position (Castelloe and Templeton, 1994). More divergent haplotypes (B, C, L, K, R and Q) are found in the extremes of the southern coastal distribution (Brazilian Coast, French Guiana and the Amazonian Estuary). Less regional structure was found among the riverine population units compared to the coastal population units. Although the Western Amazon and the Eastern Amazon population units share only one haplotype, shorter genetic distances separate all riverine lineages, suggesting a lesser degree of differentiation than in the coastal haplotypes. This could be due to the relative shorter evolutionary history of riverine *Sotalia* when compared to the possibly longer evolutionary history of the coastal species (Caballero *et al.*, 2007). Higher levels of female gene flow could also be expected between the Amazonian population units due to the scattered distribution of small groups of riverine *Sotalia* individuals along the main channels and tributaries of the Amazon River. Interestingly, in our study, significant statistical differences were obtained at the  $\Phi_{ST}$  level between the two Amazonian population units considered in the AMOVA analysis (Table 3). This might be due to the presence of a few very distinctive haplotypes with several nucleotide differences among these population units, especially haplotypes from samples from the extremes of the distribution. The haplotype genealogy (Figure 4b) confirmed these findings, suggesting that haplotypes X, S and T may be ancestral. It can be observed that haplotypes EE and DD are more divergent. This is an interesting finding, since haplotypes X, S and T were determined in samples collected along the main channel of the Amazon River and also in some tributaries located centrally along the distribution of *Sotalia fluviatilis* (Tefé, Puerto Nariño, Caquetá River) while haplotypes DD and EE were determined in samples from locations at the extremes of the distribution, for example the Cuyabeno River (EE) and Santarém (DD). This result can be reflecting patterns

of connectivity among different Amazonian tributaries and channels with increasing haplotype and population differentiation in more isolated tributaries. More sampling along other Amazon River tributaries is required in order to rule out artifacts due to our small sample size. Overall, haplotype and nucleotide diversities for the mitochondrial DNA CR in *Sotalia guianensis* and *Sotalia fluviatilis* are similar to those reported for species with similar distributions and habitat ranges, including the Antillean and Amazonian manatees (García-Rodríguez *et al.*, 1998, Vianna *et al.*, 2006) and the Amazon River dolphin *Inia geoffrensis* (Banguera-Hinestroza *et al.*, 2002).

#### IMPLICATIONS FOR *SOTALIA GUIANENSIS* AND *SOTALIA FLUVIATILIS* CONSERVATION AND MANAGEMENT

Our results suggest the existence of several distinct coastal and riverine *Sotalia* populations with localized distributions. As a result, at least two different conservation strategies need to be developed for each of the proposed sister-species. For the coastal groups, characterized by restricted female gene flow and very localized populations it is advisable to work at a local level in order to improve the fishing practices and prevent frequent dolphin entanglement in nets. This would require greater regulation and law enforcement of both commercial and artisanal fisheries. The extent of direct take and trade needs to be determined in more of these coastal areas, as done by Beltrán-Pedrerós (1998) in the Amazonian Estuary region, and other authors in localized areas along the Brazilian Coast (Barros and Teixeira, 1994; Monteiro-Neto *et al.*, 2000; Meirelles *et al.*, 2010 this volume). The relatively low nucleotide diversity found in the Brazilian Coast population, needs to be taken into consideration in local management initiatives and requires further investigation. Greater conservation effort should also be directed at the unique Maracaibo Lake population, which is threatened by petroleum production in its environment (Lentino and Bruni, 1994). Research on its demographic status, life history and population estimates needs to be undertaken. Finer-scale analysis of genetic variation of coastal *Sotalia* is needed to determine male-mediated gene flow between these restricted populations. In the case of the Amazonian populations, priority must be given to maintain the connectivity detected between regions. Obstacles to connectivity could affect these population units and hydroelectric and dam constructions must be evaluated, depending on the region where they intend to be developed, taking into consideration the distribution of *Sotalia* and other aquatic mammals and reptiles in the region, as well as routes in fish migration and abundance of prey items to sustain these groups (Smith and Smith, 1998). Boat traffic and fishery interactions must also be determined along the Amazon and most of its channels and tributaries, as has been done by researchers in the Colombian



Amazon (Trujillo *et al.*, 2000; Diazgranados *et al.*, 2002<sup>13</sup>). Local takes will result in local extinction but connectivity could mask a wider decline (Taylor, 1997). Regulation of these activities needs also to be implemented with involvement of the local communities.

### Acknowledgements

We are grateful to all the people and institutions that gave us access to samples for this study: J. G. Mead and C. Potter (U.S. Smithsonian Institution National Museum of Natural History), R. L. Brownell, students and researchers at Fundación Omacha from Colombia, R. Vieira (Oceanario Islas del Rosario, CEINER, Colombia), M. Ruíz-García (Universidad Javeriana, Colombia), F. Ospina-Navia (Acuario de Santa Marta, Colombia), S. Dussan, M. C. Rosso and N. Jiménez (UJTL, Colombia), B. de Toisy (KWATA, French Guiana), AQUASIS (Ceará, Brazil), L. Flach (PUC-MG, Brazil), IBAMA (Brazil), the DNA Archive (*S. guianensis*, *S. fluviatilis* and *S. bredanensis* samples) and T. Jefferson from the NMFS South West Fisheries Science Center and to the Agriculture, Fisheries and Conservation Department of Hong Kong (access to *S. chinensis* samples). All Brazilian samples were collected with the government permit IBAMA 131/2004. This research was developed according to the special authorization for access to genetic resources in Brazil # 03/2004 issued by IBAMA/CGEN. In Colombia, authorization was granted by Ministerio del Medio Ambiente, Vivienda y Desarrollo Territorial (Contrato de Acceso a Recursos Genéticos No. 001). Thanks especially to P. Lara (UFMG, Brazil) and M. Oremus for help with some laboratory and statistical analysis. Funding was provided by the New Zealand Marsden Fund (to C. S. Baker), a University of Auckland International PhD Scholarship (to S. Caballero), Colciencias-LASPAU (to S. Caballero), a Cetacean International Grant-In-Aid (to S. Caballero and J. A. Vianna), Universidad de los Andes (Colombia), Universidad Javeriana (Colombia), Conselho Nacional de Pesquisas (CNPq-Brazil), The University of Auckland Graduate Research Fund and private resources. Thanks to Dr. A. R. Amaral and Dr. T. Frasier for comments on an earlier version of the manuscript.

### References

ALONSO, M.B., MARIGO, J., BERTOZZI, C.P., SANTOS, M.C.O., TANIGUCHI, S. AND R.C. MONTONE (2010) Occurrence of chlorinated pesticides and polychlorinated biphenyls (PCBs) in Guiana dolphins (*Sotalia guianensis*) from Ubatuba and Baixada Santista, São Paulo, Brazil. *Latin American Journal of Aquatic Mammals* 8(1-2): 123-130. <http://dx.doi.org/10.5597/lajam00161>

BAKER, C.S., SLADE, R.W., BANNISTER, J.L., ABERNETHY, R.B., WEINRICH, W.T., LIEN, J., URBAN, J., CORKERON, P., CALAMBOKIDIS, J., VASQUEZ, O. AND PALUMBI, S.R. (1994) Hierarchical structure of mitochondrial DNA gene flow among humpback whales *Megaptera novaeangliae*, world-wide. *Molecular Ecology* 3(4): 313-327. <http://dx.doi.org/10.1111/j.1365-294X.1994.tb00071.x>

BANGUERA-HINESTROZA, E., CÁRDENAS, H., RUÍZ-GARCÍA, M., MARMONTEL, M., GAITÁN, E., VÁSQUEZ, R. AND GARCÍA-VALLEJO, F. (2002) Molecular identification of evolutionarily significant units in the Amazon River dolphin *Inia* sp. (Cetacea: Iniidae). *Journal of Heredity* 93(5): 312-322. <http://dx.doi.org/10.1093/jhered/93.5.312>

BARROS, N. AND TEIXEIRA, R. (1994) Incidental catch of marine Tucuxi, *Sotalia fluviatilis*, in Alagoas, Northeastern Brazil. *Report of the International Whaling Commission Special Issue* 15: 265-268.

BELTRÁN-PEDREROS, S. (1998) Captura accidental de *Sotalia fluviatilis* (Gervais, 1853) na pescaria artesanal do Estuário Amazonico. M.Sc. Thesis. Instituto Nacional de Pesquisas da Amazônia. Manaus, Brazil.

BOHER, S., BOLAÑOS, J. AND COVA, L.J. (1995) Sobre un avistamiento del delfín estuarino o bufete (*Sotalia fluviatilis*) en el Orinoco Medio. *Acta Científica Venezolana* 46: 217-218.

BOROBIA, M., SICILIANO, S., LODI, L. AND HOEK, W. (1991) Distribution of the South American dolphin *Sotalia fluviatilis*. *Canadian Journal of Zoology* 69(4): 1025-1039. <http://dx.doi.org/10.1139/z91-148>

CABALLERO, S., TRUJILLO, F., VIANNA, J.A., BARRIOS-GARRIDO, H., MONTIEL, M.G., BELTRÁN-PEDREROS, S., MARMONTEL, M., SANTOS, M.C.O., ROSSI-SANTOS, M., SANTOS, F.R. AND BAKER, C.S. (2007) Taxonomic status of the genus *Sotalia*: species level ranking for 'tucuxi' (*Sotalia fluviatilis*) and 'costero' dolphins (*Sotalia guianensis*). *Marine Mammal Science* 23(2): 358-386. <http://dx.doi.org/10.1111/j.1748-7692.2007.00110.x>

CABALLERO, S. (2006) Genetic characterization of the South American coastal and riverine dolphins *Sotalia*. Ph.D. Thesis. The University of Auckland. Auckland, New Zealand.

CARR, T. AND BONDE, R. (2000) Tucuxi (*Sotalia fluviatilis*) occurs in Nicaragua, 800km north of its previously known range. *Marine Mammal Science* 16(2): 447-452. <http://dx.doi.org/10.1111/j.1748-7692.2000.tb00936.x>

CASINOS, A., BISBAL, F. AND BOHER, S. (1981) Sobre tres ejemplares de *Sotalia fluviatilis* del lago de Maracaibo (Venezuela) (Cetacea, Delphinidae). *Publicaciones del Departamento de Biología, Universidad de Barcelona, Facultad de Biología* 7: 93-96.

CASSENS, I., MARDULYN, P. AND MILINKOVITCH, M.C. (2005) Evaluating intraspecific 'network' construction methods using simulated sequence data: do existing algorithms outperform the global maximum parsimony approach? *Systematic Biology* 54(3): 363-372. <http://dx.doi.org/10.1080/10635150590945377>

CASTELLOE, J. AND TEMPLETON, A.R. (1994) Root probabilities for intraspecific gene trees under neutral coalescent theory. *Molecular Phylogenetics and Evolution* 3(2): 102-113. <http://dx.doi.org/10.1006/mpev.1994.1013>

<sup>13</sup> DIAZGRANADOS, M.C., MEJÍA, P. AND ACOSTA, A. (2002) Effect of boat traffic on the vocal and surfacing behavior of river dolphins: A key for abundance estimation methods (Abstract 5pAB3). Page 2431 in Proceedings, First Pan-American/Iberian Meeting on Acoustics, December 2002, Cancún, Mexico. *Journal of the Acoustical Society of America* 112(5)(Pt. 2).

- CUNHA, H.A., DA SILVA, V.M.F., LAILSON-BRITO, J.J., SANTOS, M.C.O., FLORES, P.A.C., MARTIN, A.R., AZEVEDO, A.F., FRAGOSO, A.B.L., ZANELATTO, R.C. AND SOLÉ-CAVA, A.M. (2005) Riverine and marine ecotypes of *Sotalia fluviatilis* are different species. *Marine Biology* 148(2): 449-457. <http://dx.doi.org/10.1007/s00227-005-0078-2>
- DA SILVA, V.M.F. AND BEST, R.C. (1994) Tucuxi *Sotalia fluviatilis* (Gervais, 1853). Pages 43-69 in RIDGWAY, S.H. AND HARRISON, R. (Eds) *Handbook of Marine Mammals*. Vol. 5, Academic Press Inc., San Diego, CA, USA.
- DA SILVA, V.M.F. AND BEST, R.C. (1996a) Freshwater dolphin/fisheries interaction in the Central Amazon (Brazil). *Amazoniana* 14(1-2): 165-175.
- DA SILVA, V.M.F. AND BEST, R.C. (1996b) *Sotalia fluviatilis*. *Mammalian Species* 527: 1-7. <http://dx.doi.org/10.2307/3504117>
- DA SILVA, V.M.F., FETTUCIA, D., RODRIGUES, E.S., EDWARDS, H., MORENO, I.B., MOURA, J.F., WEDEKIN, L.L., BAZZALO, M., EMIN-LIMA, N.R., CARMO, N.A.S., SICILIANO, S. AND UTRERAS B., V. (2010) Distribution, habitat characteristics and preferences, and group size of dolphins of the genus *Sotalia*. *Latin American Journal of Aquatic Mammals* 8(1-2): 31-38. <http://dx.doi.org/10.5597/lajam00151>
- DUPANLOUP, I., SCHNEIDER, S. AND EXCOFFIER, L. (2002) A simulated annealing approach to define the genetic structure of populations. *Molecular Ecology* 11(12): 2571-2581. <http://dx.doi.org/10.1046/j.1365-294X.2002.01650.x>
- EXCOFFIER, L., SMOUSE, P.E. AND QUATTRO, J.M. (1992) Analysis of molecular variance inferred from metric distances among DNA haplotypes: application to human mitochondrial DNA restriction data. *Genetics* 131: 479-491.
- GARCÍA-RODRÍGUEZ, A.I., BOWEN, B.W., DOMNING, D., MIGNUCCI-GIANNONI, A.A., MARMONTEL, M., MONTROYA-OSPINA, R.A., MORALES-VELA, B., RUDIN, M., BONDE, R.K. AND MCGUIRE, P.M. (1998) Phylogeography of the West Indian manatee (*Trichechus manatus*): how many populations and how many taxa? *Molecular Ecology* 7(9): 1137-1149. <http://dx.doi.org/10.1046/j.1365-294x.1998.00430.x>
- GÓMEZ-SALAZAR, C., PORTOCARRERO-AYA, M., TRUJILLO, F., CABALLERO, S., BOLAÑOS-JIMÉNEZ, J., UTRERAS, V., MCGUIRE, T., FERRER-PÉREZ, A., POOL, M. AND E. ALIAGA-ROSSEL (2010) Update on the freshwater distribution of *Sotalia* in Colombia, Ecuador, Peru, Venezuela and Suriname. *Latin American Journal of Aquatic Mammals* 8(1-2): 171-178. <http://dx.doi.org/10.5597/lajam00166>
- HERSHKOVITZ, P. (1962) Notes on South American dolphins of the genera *Inia*, *Sotalia* and *Tursiops*. *Journal of Mammalogy* 44(1): 98-103. <http://dx.doi.org/10.2307/1377172>
- KLINOWSKA, M. (1991) *The Red data book: dolphins, porpoises and whales of the world*. International Union for the Conservation of Nature and Natural Resources IUCN, Gland, Switzerland.
- KUHNER, M.K., YAMATO, J. AND FELSENTIN, J. (1998) Maximum likelihood estimation of population growth rates based on the coalescent. *Genetics* 149: 429-434.
- LENTINO, M. AND BRUNI, A.R. (1994) *Humedales costeros de Venezuela: situación ambiental*. Sociedad Conservacionista Audubon de Venezuela.
- MADDISON, D.R. AND MADDISON, W.P. (2000) *MacClade: analysis of phylogeny and character evolution*. Sinauer, Sunderland, MA, USA.
- MEIRELLES, A.C.O., RIBEIRO, Á.C., SILVA, C.P.N. AND SOARES-FILHO, A.A. (2010) Records of Guiana dolphin, *Sotalia guianensis*, in the state of Ceará, northeastern Brazil. *Latin American Journal of Aquatic Mammals* 8(1-2): 97-102. <http://dx.doi.org/10.5597/lajam00157>
- MONTEIRO-FILHO, E.L.A., RABELLO-MONTEIRO, L. AND REIS, S.F. (2002) Skull shape and size divergence in dolphins of the genus *Sotalia*: a morphometric tridimensional analysis. *Journal of Mammalogy* 83(1): 125-134. <http://dx.doi.org/10.1644/1545-1542%282002%29083%3C0125:SSASD1%3E2.0.CO;2>
- MONTEIRO-NETO, C., ITAVO, R.V. AND SOUZA-MORAES, L.E. (2003) Concentrations of heavy metals in *Sotalia fluviatilis*. *Environmental Pollution* 123(2): 319-324. <http://dx.doi.org/10.1016/S0269-7491%2802%2900371-8>
- MONTEIRO-NETO, C., TEIXEIRA-ALVES, T., CAPIBARIBE-AVILA, F.J., ALVES-CAMPOS, A., FERNANDES-COSTA, A., NEGRÃO-SILVA, C.P. AND FURTADO-NETO, M.A.A. (2000) Impact of fisheries on the tucuxi (*Sotalia fluviatilis*) and rough-toothed dolphin (*Steno bredanensis*) populations off Ceará state, northeastern Brazil. *Aquatic Mammals* 26(1): 49-56.
- MORITZ, C. (1994) Application of mitochondrial DNA analysis in conservation: a critical review. *Molecular Ecology* 3(4): 401-411. <http://dx.doi.org/10.1111/j.1365-294X.1994.tb00080.x>
- PICHLER, F.B., DALEBOUT, M. AND BAKER, C.S. (2001) Nondestructive DNA extraction from sperm whale teeth and scrimshaw. *Molecular Ecology Notes* 1(1-2): 106-109. <http://dx.doi.org/10.1046/j.1471-8278.2001.00027.x>
- POSADA, D. AND CRANDALL, K.A. (1998) Modeltest: testing the model of DNA substitution. *Bioinformatics* 14(9): 817-818. <http://dx.doi.org/10.1093/bioinformatics/14.9.817>
- REEVES, R.R., SMITH, B.D., CRESPO, E.A. AND DI SCIARA, G.N. (2003) *2002-2010 Conservation Action Plan for the world's cetaceans: dolphins, whales and porpoises*, International Union for the Conservation of Nature and Natural Resources IUCN, Gland, Switzerland. <http://dx.doi.org/10.2305/IUCN.CH.2003.SSC-AP.2.en>
- SAMBROOK, J., FRITSCH, E.F. AND MANIATIS, T. (1989) *Molecular cloning: a laboratory manual*, Cold Spring Harbor Laboratory Press, New York.
- SCHNEIDER, R., ROESSLI, D. AND EXCOFFIER, L. (2000) *Arlequin: a software for population genetic data analysis*. Genetic and Biometry Laboratory, University of Geneva, Geneva, Switzerland.
- SICILIANO, S. (1994) Review of small cetaceans and fishery interactions in the coastal waters of Brazil. *Report of the International Whaling Commission Special Issue* 15: 241-250.
- SMITH, A.M. AND SMITH, B.D. (1998) Review of status and threats to river cetaceans and recommendations for their conservation. *Environmental Reviews* 6(3-4): 189-206. <http://dx.doi.org/10.1139/er-6-3-4-189>
- SWOFFORD, D.L. (2002) *PAUP: phylogenetic analysis using parsimony, 4.0b10*. Florida State University, FL.
- TAKAHATA, N. AND PALUMBI, S.R. (1985) Extranuclear differentiation and gene flow in the finite island model. *Genetics* 109: 441-457.
- TAYLOR, B.L. (1997) Defining 'population' to meet management objectives for marine mammals. Pages 49-65 in DIZON, A.E., CHIVERS, S.J. AND PERRIN, W.F. (Eds) *Molecular genetics of marine mammals*. Society for Marine Mammalogy, Lawrence, KS, USA.

- TRUJILLO, F., GARCÍA, C. AND AVILA, J.M. (2000) Status and conservation of the tucuxi *Sotalia fluviatilis* (Gervais, 1853): marine and fluvial ecotypes in Colombia. Paper SC/52/SM11 presented to the Scientific Committee, International Whaling Commission, Adelaide, Australia, June 2000. [Available from the Office of the International Whaling Commission, The Red House, 135 Station Road, Impington, Cambridge, Cambridgeshire CB4 9NP, UK, <<http://iwcoffice.org>>].
- VIANNA, J.A., BONDE, R.K., CABALLERO, S., GIRALDO, J.P., LIMA, R.P., CLARK, A.M., MARMONTEL, M., MORALES-VELA, B., SOUZA, M.J., PARR, L., RODRÍGUEZ-LÓPEZ, M.A., MIGNUCCI-GIANNONI, A.A., POWELL, J. AND SANTOS, F.R. (2006) Phylogeography, phylogeny and hybridization in trichechid sirenians: implications on manatee conservation. *Molecular Ecology* 15(2): 433-447. <http://dx.doi.org/10.1111/j.1365-294X.2005.02771.x>
- YOGUI, G.T., SANTOS, M.C.O. AND MONTONE, R.C. (2003) Chlorinated pesticides and polychlorinated biphenyls in marine tucuxi dolphins (*Sotalia fluviatilis*) from the Cananéia estuary, southeastern Brazil. *Science of the Total Environment* 312(1-3): 67-78. <http://dx.doi.org/10.1016/S0048-9697%2803%2900198-0>

Received 7 January 2008. Accepted 30 November 2009.  
Managed by Eduardo Secchi.

